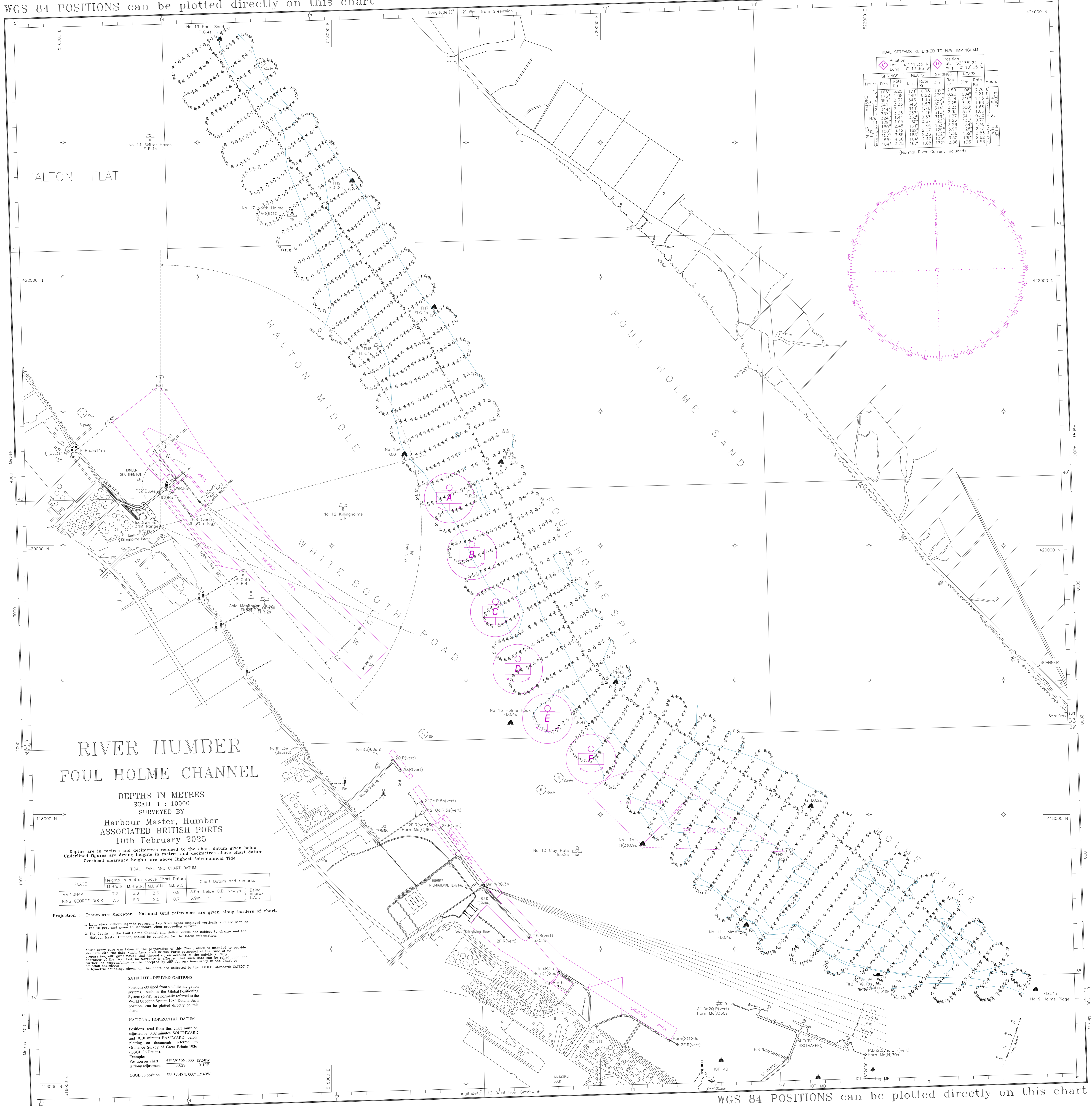


WGS 84 POSITIONS can be plotted directly on this chart

© Copyright 2025. All rights reserved. No part of this product may be reproduced in any form (including photocopying or by electronic means) without prior permission.



TIDAL STREAMS REFERRED TO H.W. IMMINGHAM

Hours	SPRINGS			NEAPS		
	Dirn	Rate	Dirn	Rate	Dirn	Rate
6	163°	1.25	171°	0.98	132°	2.59
12	175°	1.08	249°	0.22	239°	0.20
18	355°	3.32	345°	1.15	303°	2.24
0	340°	3.03	345°	1.53	305°	3.25
6	344°	3.14	345°	1.76	316°	2.95
12	337°	3.25	337°	1.26	316°	2.95
18	324°	1.41	337°	0.53	319°	1.27
0	123°	1.05	160°	0.57	122°	1.25
6	160°	2.45	161°	1.46	133°	3.26
12	156°	3.12	162°	2.07	128°	3.96
18	157°	3.85	163°	2.36	132°	4.36
0	155°	4.30	164°	2.47	135°	3.60
6	164°	3.78	167°	1.88	132°	2.86

(Normal River Current Included)

RIVER HUMBER FOUL HOLME CHANNEL

DEPTHS IN METRES
SCALE 1 : 10000
SURVEYED BY

Harbour Master, Humber
ASSOCIATED BRITISH PORTS
10th February 2025

Depths are in metres and decimetres reduced to the chart datum given below
Underlined figures are drying heights in metres and decimetres above chart datum
Overhead clearance heights are above Highest Astronomical Tide

TIDAL LEVEL AND CHART DATUM

PLACE	Heights in metres above Chart Datum			Chart Datum and remarks
	M.H.W.S.	M.L.W.N.	M.L.L.W.S.	
IMMINGHAM	7.3	5.8	0.9	3.9m below O.D. Newlyn } Being approx.
KING GEORGE DOCK	7.6	6.0	2.5	3.9m - - - } above chart datum

Projection - Transverse Mercator. National Grid references are given along borders of chart.

- Light stars without legends represent two fixed lights displayed vertically and are seen as red to port and green to starboard when proceeding upriver.
- The depths in the Foul Holme Channel and Halton Middle are subject to change and the Harbour Master Humber, should be consulted for the latest information.

Whilst every care was taken in the preparation of this Chart, which is intended to provide Mariner with the data which is considered to be correct at the time of the preparation, ABP gives notice that thereafter, on account of the quickly shifting character of the river beds no warranty is effected that such data can be relied upon and, further, no responsibility can be accepted by ABP for any inaccuracies in the Chart or omission therefrom.
Bathymetric soundings shown on this chart are collected to the U.K.H.O. standard CATOC C

SATELLITE - DERIVED POSITIONS

Positions obtained from satellite navigation systems, such as the Global Positioning System (GPS), are normally referred to the World Geodetic System 1984 Datum. Such positions can be plotted directly on this chart.

NATIONAL HORIZONTAL DATUM

Positions read from this chart must be adjusted by 0.02 metres SOUTHWARD and 0.10 metres EASTWARD before plotting on documents referred to Ordnance Survey of Great Britain 1936 (OSGB 36 Datum).

Example:
Position on chart 53° 39' 50N, 000° 12' 50W
lat/long adjustments 0'02S 0'10E
OSGB 36 position 53° 39' 48N, 000° 12' 40W

WGS 84 POSITIONS can be plotted directly on this chart